

Mighty Seam™, HFW Line Pipe (1/3)

1. Features

Mighty Seam™ is a high-performance HFW* line pipe that employs advanced QC/QA** technologies.

Mighty Seam™ features:

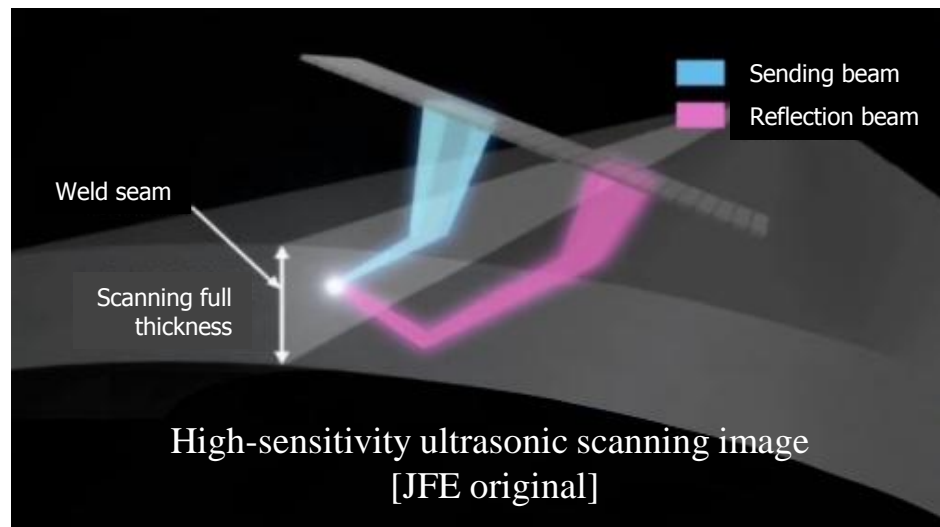
- 1) Clean, full-length electric-weld seams (highly reliable seams)
- 2) Both weld seam and pipe body exhibit superior properties.

[I.E., lower temperature toughness and higher strain capacity]

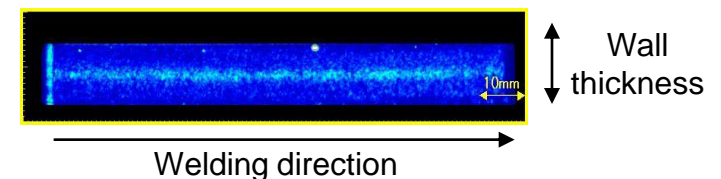
Mighty Seam™ has been qualified by major companies and used in applications in place of Seamless and UOE line pipes at a lower investment cost.

*HFW pipe: a pipe welded using High-Frequency Electric resistance welding.

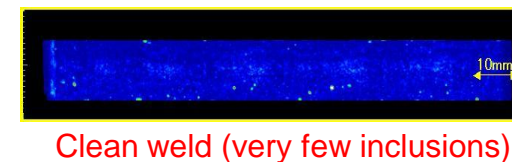
**QC: Quality Control; QA: Quality Assurance



Conventional HFW



Mighty Seam™ HFW





Mighty Seam™, HFW Line Pipe (2/3)

2. Technical Advantages

Suitable for demanding applications, such as:

- 1) Reel-lay (DNV OS-F101 Suffix-P)
- 2) Low-temperature service
-46°C (-50°F)
- 3) Sour service (API 5L Annex-H)
- 4) J-lay and S-lay
- 5) Heavy wall pipes of up to 25.4 mm (1.000")

Reeling simulation
bend test (No buckling)



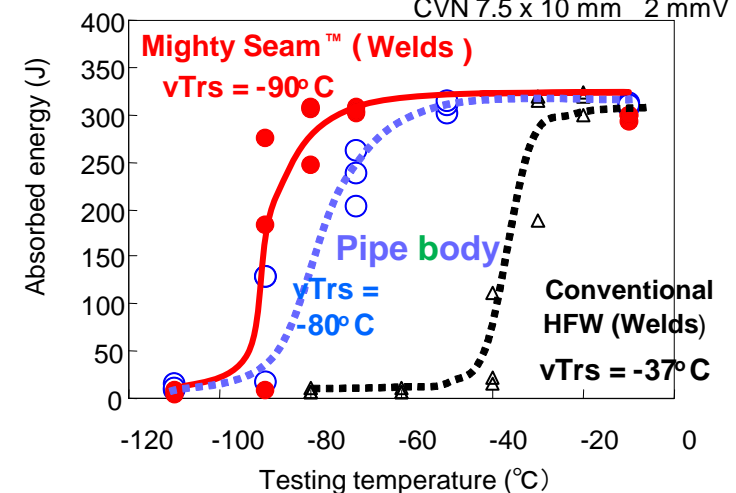
3. Commercial Advantages

- Cost competitive against Seamless or DSAW pipe
- More efficient girth welding during installation due to its precise diameter

Charpy Impact Test Properties

X65M PSL2 323.9 mm x WT15.9 mm

CVN 7.5 x 10 mm 2 mmV





Mighty Seam™, HFW Line Pipe (3/3)

4. Supply Record

Developed in 2009

- **Field Proven** : In total, 33,000 MT has been supplied globally.
- **Customers** : Supermajors, national oil companies, major EPC companies
- **Areas** : Canada, Alaska, Northern Europe, Australia, etc.

Suitable Applications

- **Low temperature service** (-46°C [-50°F])
- **Reel-lay**
- **Offshore Sour Gas**

A supermajor oil company employs Mighty Seam™ as it highly rates its excellent weld reliability.

Contact Address

Region	Office	Person in charge	✉ E-mail Address	☎ Phone
America >	JFE Steel America, Inc., Houston Office	Nobuhiko Kusui	n-kusui@us.jfe-steel.com	(1) 713-532-0052
Europe / Russia / Africa >	JFE Steel Europe Limited (London)	Masaaki Doi	m-doi@jfe-steel.co.jp	(44) 20-7426-0166
Asia / Pacific >	JFE Steel Asia Pte. Ltd. (Singapore)	Toru Kuwana	to-kuwana@sg.jfe-steel.com	(65) 6-220-1174
Middle East >	JFE Steel Corporation, Dubai Office	Yosuke Imai	yo-imai@jfe-steel.co.jp	(971) 4-884-1833